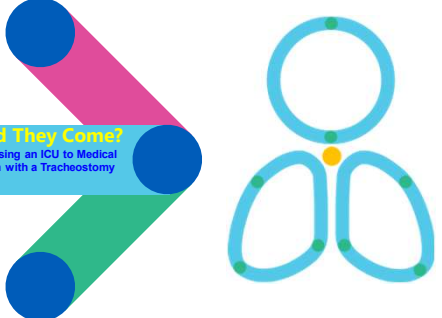


CookChildren's

Ready or Not, Should They Come?

Preventing Patient Deterioration Using an ICU to Medical Unit Transfer Protocol for Children with a Tracheostomy

*Kia McCoy, MSN, RN
Clinical Nurse Leader*



1

About Cook Children's



CookChildren's

2

Transitional Care Unit

RN

RESPIRATORY THERAPY

PCT



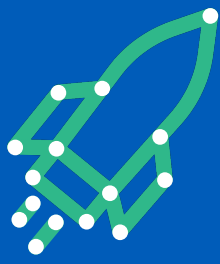
CookChildren's

Confidential

3

How It All Started

- Most codes outside of the ICU
- Frequent transfers to the ICU
- Damage to the staff-caregiver relationship
- Caregiver mistrust in staff
- Staff burnout
- Misuse of resources



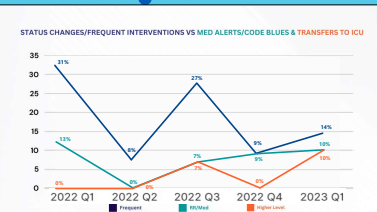
CookChildren's Confidential 4

4

Pre-Protocol Trends

Frequent Interventions vs Med Alerts/Codes and Transfers to ICU

- 15 month period
- 8-31% of patients required additional monitoring and intervention compared to time in the ICU
- During quarters where frequent interventions were highest:
 - 7-13% of med alerts and code blues were initiated
 - 7-10% were transferred back to a higher level of care



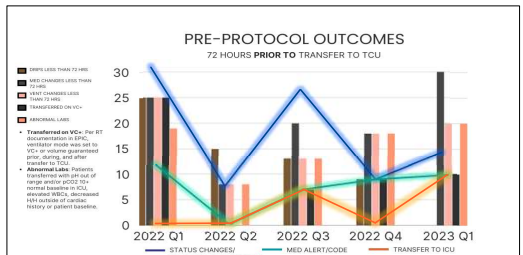
Graph above provides evidence and visual confirmation that the occurrence of unexpected complications resulting in the nurse/RT providing interventions such as manual breaths on ventilator, oxygen boosts, and bagging within the first 48 hours after transfer to ICU from the ICU correlates with an increase in med alerts/code blues on the unit and transfers to ICU.

CookChildren's

5

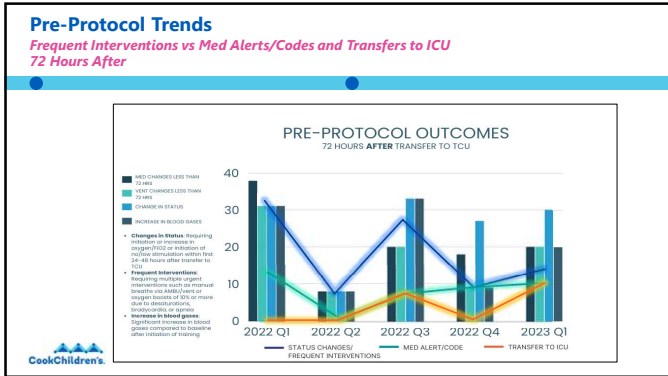
Pre-Protocol Trends

Frequent Interventions vs Med Alerts/Codes and Transfers to ICU 72 Hours PRIOR

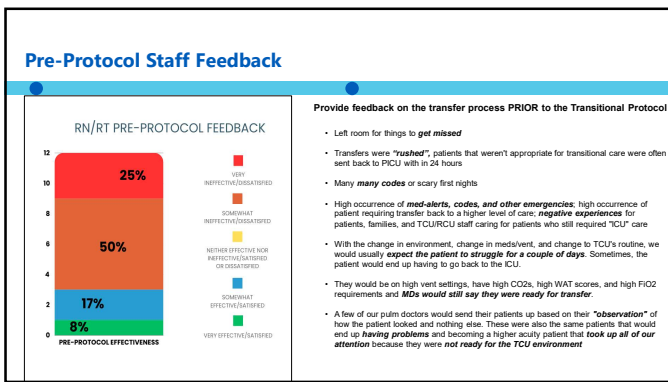


CookChildren's

6



7



8

Pre-Transfer Worksheets

NICU:

- Avoid ventilator changes for 72hrs
- Off sedation drips for 72hrs
- Avoid weaning sedation meds
- Hold immunizations
- Reposition q 2h
- Place in a standard-size crib
- Stable blood gases/labs

ICU/PICU:

- Avoid ventilator changes for 24 hrs
- Off sedation drips for 48 hrs
- Avoid weaning sedation meds
- Stable blood gases/labs

NICU/TCU Transition Worksheet-Pre Transfer

When you are transferring a patient from the NICU to the TCU, please complete this worksheet.

NICU/TCU Transition Worksheet-Pre Transfer

When you are transferring a patient from the TCU to the ICU, please complete this worksheet.

ICU/PICU/TCU Transition Worksheet-Pre Transfer

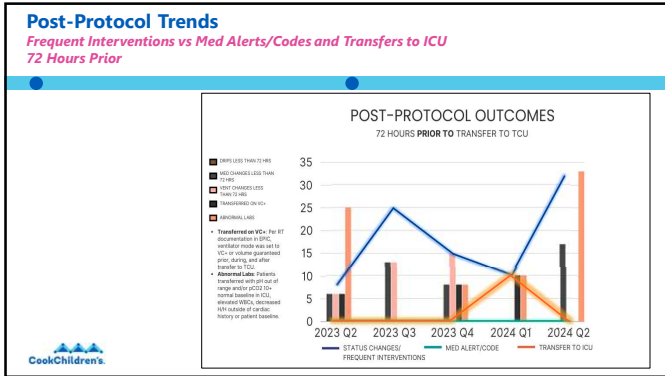
When you are transferring a patient from the ICU/PICU/TCU to the TCU, please complete this worksheet.

ICU/PICU/TCU Transition Worksheet-Pre Transfer

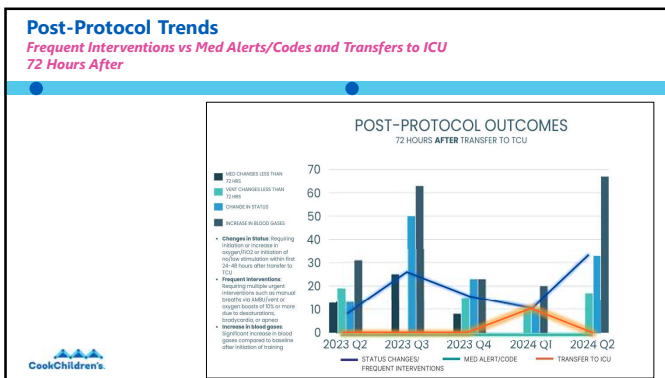
When you are transferring a patient from the TCU to the ICU/PICU, please complete this worksheet.

CookChildren's

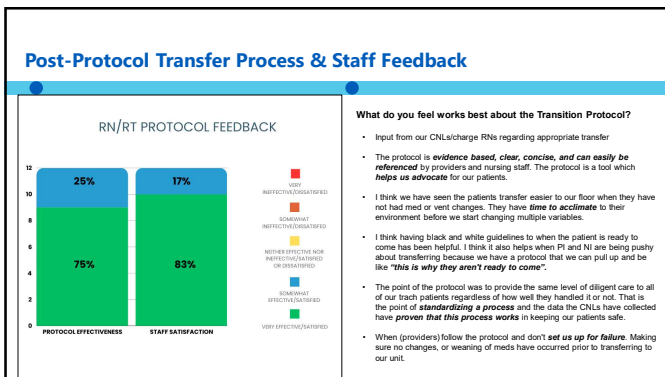
9



13



14



15

New CookNet Department Page for TCU/RCU

16

17

18
