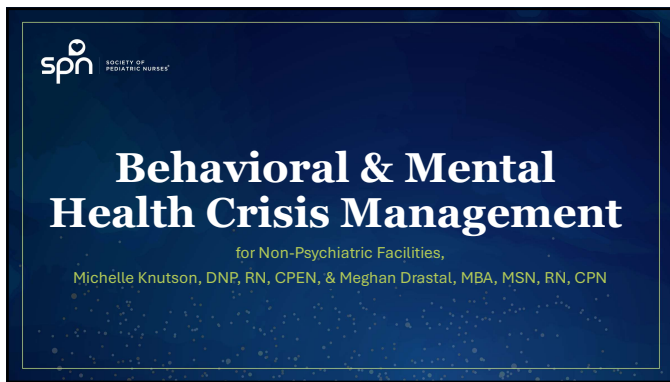




1



2



3

Agenda

- Background
- Organizational Assessment & Policy
- Support Teams
- Screening & Documentation
- Resources & Environment
- Training
- Simulation Development
- Q & A



4

Background

THE CHALLENGE

Between 2009 and 2019, Emergency Department visits for patients under 18 have more than doubled for Mental and Behavioral Health needs.

Increase in acute agitation and aggressive behavior in pediatric patients resulting in violent behavior involving staff.

(Hoffman et al., 2024)



5

Background

NURSING IMPLICATION

Non-psychiatric nursing staff feel that they don't have sufficient training or resources to care for behavioral and mental health patients on inpatient, non-psychiatric units.

(Van Orne, 2024)



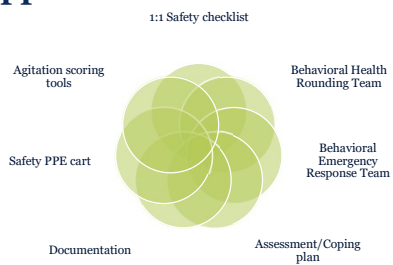
6

What is your experience with this?



7

Layered Approach



8

**What are YOUR Challenges in
managing behavioral health
patients?**



9



10



11



12

Conducting a Needs Assessment

Incident Review & Risk Analysis

Resource Mapping

Engaging Stakeholders

Children's Hospital Los Angeles (2015), BERT Dashboard

Imagine THE POSSIBILITIES 35th Anniversary April 30, 2025 - May 2, 2025 + Disneyland Hotel spn

13

Leadership Commitment

Budget & Resource Allocation

Interdisciplinary Oversight

Clear Accountability

Imagine THE POSSIBILITIES 35th Anniversary April 30, 2025 - May 2, 2025 + Disneyland Hotel spn

14

Policies & Procedures

1:1 Observation Policies

Zero-Tolerance for Workplace Violence

Restraint Use

BERT Policy and procedure

Include **ALL** areas

Imagine THE POSSIBILITIES 35th Anniversary April 30, 2025 - May 2, 2025 + Disneyland Hotel spn

15

Metrics

DIRECT	INDIRECT
Restraint Use	Turnover
Staff Injury	Compliance
Days Away Restricted Transfer (DART)	Patient/family engagement
	Staff training



imagine THE POSSIBILITIES **35th** ANNIVERSARY April 30, 2025 - May 2, 2025 Disneyland Hotel spn

16

Safety & Behavioral Health



17

spn SOCIETY OF PEDIATRIC NURSES



Support Teams

18

BERT Planning

Behavioral Emergency Response Team (BERT)



- Team Composition**
 - Psych/MH nurse, House Supervisor, Security, Social worker, Child Life specialist, Provider
- Activation Process**
 - Modeled after medical rapid responses
- BERT Function**
- Post-Event Debrief**



 April 30, 2025 - May 2, 2025 + Disneyland Hotel

19

BERT Implementation

- Assessment
- Define Team
- Develop Goals
- Create Policy/Protocol
- Design Training
- Implement
- Track Metrics
- Support



 April 30, 2025 - May 2, 2025 + Disneyland Hotel

20

BERT Process

- Early Intervention
- Verbal De-escalation
- Trauma-Informed Care
- Cultural Humility
- Environment & Triggers
- Family Centered Care
- Documentation





 April 30, 2025 - May 2, 2025 + Disneyland Hotel

21

Behavioral Health Rounding Team

Goals

- Proactive safety
- In person support and education

Team Composition

- Multidisciplinary
- Standing vs As Needed



April 30, 2025 - May 2, 2025 + Disneyland Hotel


22

Behavioral Health Rounding Team

Rounding Protocol

- M, W, F
- Rounding criteria
- Proactive planning
- Care Coordination
- Documentation



ChatGPT. (img). Rounding Team in Hospital (AI Generated Image).




April 30, 2025 - May 2, 2025 + Disneyland Hotel


23




Assessment & Documentation

24



Aggression Screening

- Behavioral Situational Awareness
- EMR Flagging
- Screening Tools

ChatGPT (img2). Nurse documenting (AI-generated image)

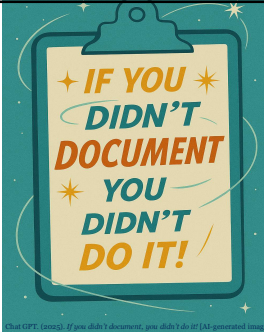
imagine THE POSSIBILITIES **35th** ANNIVERSARY April 30, 2025 - May 2, 2025 + Disneyland Hotel spn

25

Coping and Support Plan

Multidisciplinary document to communicate:

- Triggers
- Coping strategies
- PRN lines
- Escalation plan
- High risk considerations



ChatGPT (img2). If you didn't document, you didn't do it! (AI-generated image)

imagine THE POSSIBILITIES **35th** ANNIVERSARY April 30, 2025 - May 2, 2025 + Disneyland Hotel spn

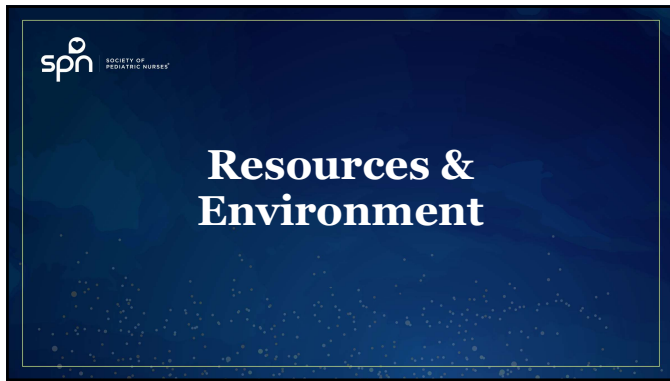
26

Behavioral Health Safe Activity Guidelines

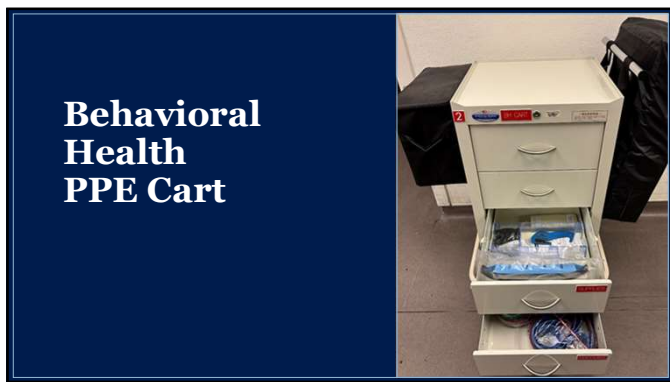
- Tier 1, 2, 3, & restricted items
- Follow a "1 in, 1 out" approach to limit patient access to unneeded items.
- All items should be accounted going in and coming out
- Nursing can restrict items based on clinical judgment

imagine THE POSSIBILITIES **35th** ANNIVERSARY April 30, 2025 - May 2, 2025 + Disneyland Hotel spn

27



28



29

Behavioral Health PJs & Slippers

- Anti ligature
- Durable seams & hems
- Variety of sizes




Chat GPT. (2023). Generic anti-ligature pajamas and slippers [AI-generated images]




April 30, 2025 ~ May 2, 2025 + Disneyland Hotel



30

Room & Safety Modifications

Standard Risk Room Modifications	High-risk Modifications
- Ligature risks	- Security standby
- Suffocation risks	- 2:1 or RN observation
- Medical equipment not being used	- Personal protection (no lanyards, tie hair back)
- Ingestion risk	- Further room modifications
- Potential weapons	




 April 30, 2025 - May 2, 2025 + Disneyland Hotel
 


31

Patient Safety Checklist



- Room & safety modifications
- BSA
- Tier 1 Safe Activity Guidelines
- Skin and safety assessment
- BH PJs and slippers
- Inspect undergarments
- Itemize and secure belongings



 April 30, 2025 - May 2, 2025 + Disneyland Hotel
 

32

1:1 Observation Practices



**1:1 SAFETY
OBSERVATION**



SITTER POLICY



**STANDARDIZED 1:1
SITTER CHECKLIST**

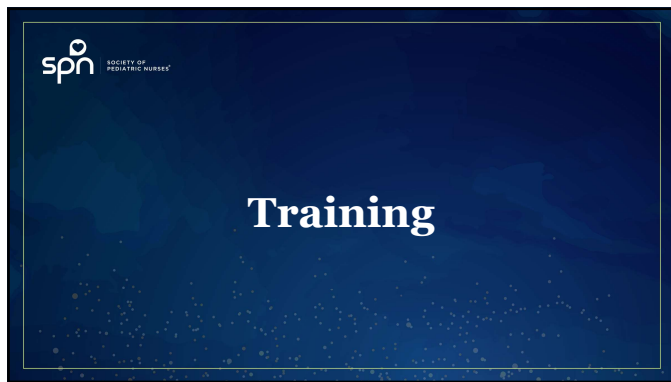


 April 30, 2025 - May 2, 2025 + Disneyland Hotel
 

33



34



35



36

Training the Teams

Why Training Matters

- Role-Specific Training
- Training Modalities
- Supportive Environment



37



Simulation Development

38

Simulation for Behavioral Crisis



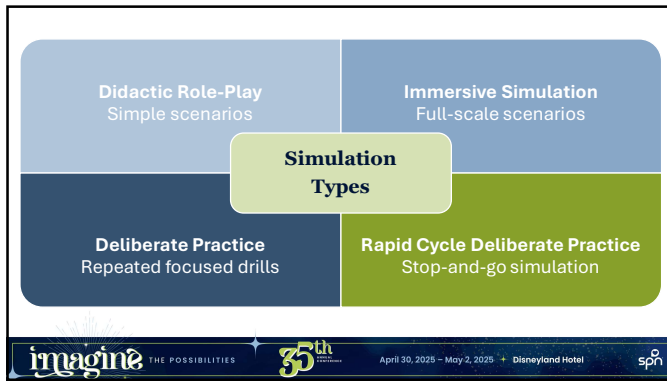
Why Simulation?



High-risk, low-frequency events like pediatric behavioral crises are ideal for simulation training – practice without harm



39



40

Simulation Practice

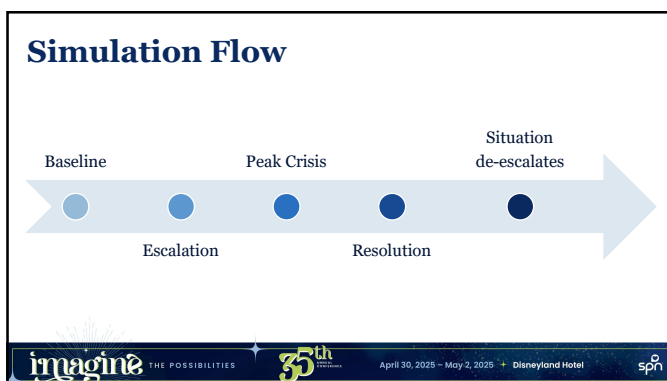
Planning

- Choose a scenario
- Define learning objectives
- Outline the scenario flow
- Assign roles
- Use tools and checklists
- Debrief plan

Chat GPT. (2023). Simulation in pediatric hospital [AI-generated image]

Imagine THE POSSIBILITIES 35th Anniversary April 30, 2025 - May 2, 2025 + Disneyland Hotel spn

41



42

Debrief plan

- Plus-Delta
- PEARLS

Debrief Questions:

- Ask participants to provide a recap
- Highlight key learning points
- Discuss emotional responses



43

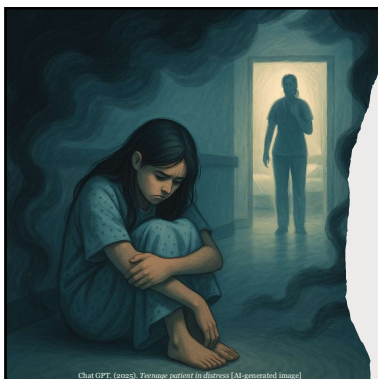
Example Scenario

"A 15-year-old female admitted after a suicide attempt is on the pediatric unit awaiting psych placement. Her mother steps out to talk to a doctor, and during that time, the patient becomes increasingly anxious and tries to leave the unit to find her mom. She starts yelling and pounding on the door."

44

Objectives

- Nurse uses verbal de-escalation to keep the girl safe
- Call BERT if she escalates to trying to self-harm or elope
- Maintain a calm environment and involve the parent appropriately once available



Chat GPT. (2023). Teenage patient in distress (AI-generated image)

45

Breakout Simulation Design

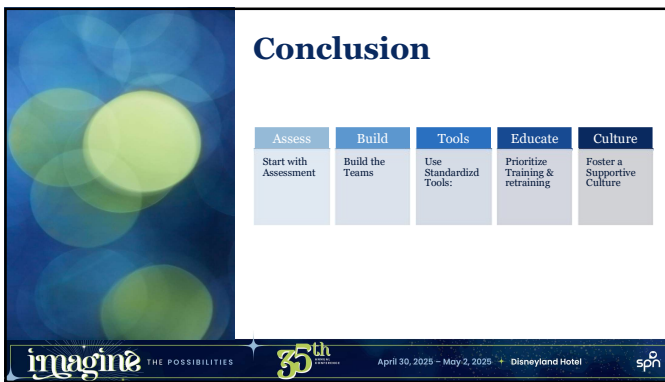
- Choose a Scenario:** e.g., school-age child with developmental delay becoming self-injurious; teen with psychosis attempting to elope.
- Define Objectives:** What skills or protocols do you want to practice?
- Scenario Outline:** Detail the setting, triggers for escalation, and how the scenario should progress.
- Roles & Team:** Which roles are needed.
- Incorporate Tools:** Decide which tools/checklists to include



46

Conclusion

Assess	Build	Tools	Educate	Culture
Start with Assessment	Build the Teams	Use Standardized Tools:	Prioritize Training & retraining	Foster a Supportive Culture



47

Questions?



48

Contact

Michelle Knutson, DNP, RN, CPEN

NPD Specialist: Safety
mknutson@chla.usc.edu

Meghan Drastal, MSN, MBA, RN, CPN

PCS Behavioral Health Manager
mdrastal@chla.usc.edu



49

References

American Hospital Association. (n. d.). Workforce and workplace violence prevention. <https://www.aha.org/workforce-and-workplace-violence-prevention>

Bambini, D. (2016). Writing a simulation scenario: A step-by-step guide. *AACN Advanced Critical Care*, 27(1) 62-79.
<https://doi.org/10.4037/aacnacc2016986>

Black Parker, C., Calhoun, A., Wong, A. H., Davidson, L., & Dike, C. (2020). A call for behavioral emergency response teams in inpatient hospital settings. *AMA Journal of Ethics*, 22(11), E956-964. <https://doi.org/10.1001/amajethics.2020.956>

Bruccoli A. M. (2023). Implementation of a behavioral emergency response team in the emergency department. *Journal of Emergency Nursing*, 49(3), 395-402. <https://doi.org/10.1016/j.jen.2023.01.011>

Children's Hospital Association. (2023, March 30). 3 ways to prevent workplace violence in children's hospitals. Children's Hospital Association.
<https://www.childrenshospitals.org/news/childrens-hospitals-today/2023/03/3-ways-to-prevent-workplace-violence-in-childrens-hospitals>

Correia, A. & Miliken, D. (2022, April 27-30). Implementing Safe, Trauma-Informed, Evidence-Based Practices (ISTEP) [Conference presentation]. SPN 2022 Conference, Anaheim, CA, United States.



50

References

Dehnke, D. & Mulkey, M. A. (2023). Using a behavioral response team on non-psychiatric nursing units. *Medsurg Nursing*, 30(4), 229-234.
<https://pubmed.ncbi.nlm.nih.gov/37181640/>

Emerson, B., Setzer, E., Blake, E., & Siew, L. (2022). Improving quality and efficiency in pediatric emergency department behavioral health care. *Pediatric Quality and Safety* 7(1), e530. <https://doi.org/10.1097/pq9.0000000000000530>

Frost, D. A., Snydeman, C. K., Lantieri, M. J., Wozniak, J., Bird, S., & Stern, T. (2020). Development and implementation of a suicide prevention checklist to create a safe environment. *Journal of the Academy of Consultation-Liaison Psychiatry*, 61(20), 154-160. <https://doi.org/10.1037/psl.1948-000>

Gonzalez, K., Faisalmoheem, P., Cutchins, L. A., Kodish, I., & Uspal, N. G. (2020). Advocacy to address emergent pediatric mental health care. *Clinical Pediatric Emergency Medicine*, 21(2). <https://doi.org/10.1016/j.cpem.2020.100778>



51

References

- Hoffman, J. A., Kshetrpal, A., Pergika, A., Foster, A. A., Wnorowska, J. H., Johnson, J. K. (2023). A qualitative assessment of barriers and proposed interventions to improve acute agitation management for children with mental and behavioral health conditions in the emergency department. *Journal of the Academy of Consultation-Liaison Psychiatry*, 65(2), 167-177. <https://doi.org/10.1016/j.jaclp.2023.12.001>
- Hughett, B. & Copeland, K. (2022). Caring for pediatric patients with aggressive behaviors. *Children's Hospital Today*. Children's Hospital Association. <https://www.childrenshospitals.org/news/childrens-hospitals-today/2022/02/strategies-for-caring-for-patients-with-aggressive-behaviors>
- Ibeziako, P., Kaufman, K., Campbell, E., Samsel, C., Qayyum, Z., & Caracanel, A. (2024). Reducing Pediatric Mental Health Boarding and Increasing Acute Care Access. *Journal of the Academy of Consultation-Liaison Psychiatry*, 65, 441-450. <https://doi.org/10.1016/j.jaclp.2024.04.001>
- Igoe, A., Stallings, M., Goddard, A., Van Graafeland, B., Roney, L. N., Peck, J. (2025). Trauma informed care: Practical application for pediatric-focused advanced practice registered nurses. *Journal of Pediatric Health Care*, 39(2), 265-275. <https://doi.org/10.1016/j.pedhc.2024.10.008>



52

References

- Johns Hopkins Medicine. (n.d.). Rapid cycle deliberate practice. Johns Hopkins Simulation Center. <https://www.hopkinsmedicine.org/simulation-center/rcdp/>
- Keller, A., Kanaley, R. L., Starc, T., Strollo, B., Scharf, M. Massachi, S. Angeli, L. Clough, D., & Schriefer, J. (2022). Mitigating pediatric inpatient aggression: A quality improvement initiative. *Hospital Pediatrics*, 12(5), 499-506. <https://doi.org/10.1542/hpeds.2021-006431>
- Kirkham, B. (2025). Measuring the impact of workplace violence prevention programs in hospitals. Texas Hospital Association. <https://www.tha.org/blog/measuring-the-impact-of-workplace-violence-prevention-programs-in-hospitals>
- Kronish, A., Alanko, D., Quinn, V. R., Wulff, C., Stone, E. & Wing, R. (2024). De-escalation of the agitated pediatric patient: A standardized patient case for pediatric residents. *MedEdPORTAL*, 2024, 20. <https://doi.org/10.15766/mep.2374-8265.11388>



53

References

- Leeb, R. T., Danielson, M. L., Claussen, A. H., Robinson, L. R., Lebrun-Harris, L. A., Ghandour, R., Bitsko, R. H., Katz, S. M., Kaminski, J. W., & Brown, J. (2024). Trends in mental, behavioral, and developmental disorders among children and adolescents in the US, 2016-2021. *Preventing Chronic Disease*, 21. <https://doi.org/10.5888/pcd21.240142>
- Li, C., Bentley, S., Gulati, M. S., Snedeker, K., & Marks, M. R. (2024). Staff safety alert banner program against workplace violence at an urban American hospital. *Workplace Health & Safety*, 73(1), 38-46. <https://doi.org/10.1177/21650799241280667>
- Long, E. M., Calloway, K., Thedford, J. M., Rolf, C., Steely, B. W., & Huff, J. (2024). Bridging nursing professional development and healthcare simulation standards of best practice. *Clinical Simulations in Nursing*, 96. [https://www.nursingsimulation.org/article/S1876-1399\(24\)00104-X/abstract](https://www.nursingsimulation.org/article/S1876-1399(24)00104-X/abstract)
- Martins, T., Santos, F., Lumini, M. J., Rui Sousa, M., Peixoto, M. J., Freire, R. M., Salazar, B., Fernandes, C., & Araujo, M. D. (2023). Realistic simulation in nursing education: Testing two scenario-based models. *Nursing Open*, 10(5), 3326 - 3335. <https://doi.org/10.1002/nop2.1585>



54

References

Martorana, J. A., Griffith, D. M., Eiger, C., Maurer, J. J., Burnside, A., Janssen, A. C., Peigjika, A., & Hoffmann, J. A. (2025). Reducing employee injuries from aggressive patient behavior at children's hospital by implementing a behavioral response team. *Pediatric quality & safety*, 10(1), e790. <https://doi.org/10.1097/pq9.0000000000000790>

Mitchell, M., Newall, F., Sokol, J., Heywood, M., & Williams, K. (2020). Simulation-based education to promote confidence in managing clinical aggression at a paediatric hospital. *Advances in Simulation*, 5(21). <https://doi.org/10.1186/s41077-020-00139-9>

Mitchell, S. A., & Boyer, T. J. (2023, May 1). Deliberate Practice in Medical Simulation. In *StarPearls*. StatPearls Publishing. Retrieved March 16, 2025 from <https://www.ncbi.nlm.nih.gov/books/NBK554558/>

Peterson, R., Kim, E., Amaniampom, A., Krause, K., Fauntleroy, K., Todd, A., La Motta, J. E., Perkins, A., Johnson, S., Brownayne, T. E., & Cox, E. (2025). Behavioral emergency response team alert disparities in a single-site pediatric hospital. *Hospital Pediatrics*, 15(4), 283-290. <https://doi.org/10.1542/hpeds.2023-907520>



55

References

Radhakrishnan, L., Leeb, R., Bitsko, R. H., Carey, K., Gates, A., Holland, K. M., Hartnett, K. P., Kite-Powell, A., DeVies, J., Smith, A. R., van Santen, K. L., Crossen, S., Sheppard, M., Wotiz, S., Lane, R. I., Njai, R., Johnson, A. G., ... Anderson, K. N. (2022). Pediatric emergency department visits associated with mental health conditions before and during the COVID-19 pandemic - United States, January 2019 - January 2022. *Morbidity and Mortality Weekly Report* 2022, 71, 319-324. <https://doi.org/10.15585/mmwr.mm7108e2>

Rajwani, A., Clark, N., & Montalvo, C. (2023). Understanding best practices in implementation of behavioral emergency response teams through a scoping review. *Journal of the American Psychiatric Nurses Association*, 29(5), 375-388. <https://doi.org/10.1177/10783903221114335>

Saleem, M., & Khan, Z. (2023). Healthcare simulation: An effective way of learning in health care. *Pakistan Journal of Medical Sciences*, 39(4), 1185-1190. <https://doi.org/10.12669/pjms.39.4.7145>

Sund, G., Kirkpatrick, T., & Choi, K. R. (2025). Applying the DASA-VV for aggression risk reduction in pediatric acute care. *Journal of Pediatric Nursing*, March 20:50882-5963(25) 00090-9. <https://doi.org/10.1016/j.pedn.2025.03.013>



56

References

Spear, S., & Mc Neely, H. (2018). A systematic process for selection of a crisis prevention/De-escalation training program in the hospital setting. *Journal of the American Psychiatric Nurses Association*, 25(4). <https://doi.org/10.1177/1078390318794281>

Statlie, A. M., Schweer, M., Herrmann, L., Warriment, A., Duncan, M., Demeritt, B., Keehn, K., Daraiseh, N. M., Whitesell, K., Li, L., Brown, D., Muth, A., Sorensen, R., Hill, A., & Simmons, J. (2023). Implementation of a children's hospital acute care behavior response team. *Pediatrics*, 152(5), e2022059112. <https://doi.org/10.1542/peds.2022-059112>

Van Orne, J. (2024). Nurse perceptions of caring for pediatric patients with behavioral health needs on non-psychiatric units during the COVID-19 pandemic. *Journal of Pediatric Nursing*, 74, 69-76. <https://doi.org/10.1016/j.pedn.2023.11.017>

Winokur, E., Zamil, T., Loucks, J., Munoz, K., & Rutledge, D. (2022). Hospital nurse competency to care for patients with behavioral health concerns. *Nurses in Professional Development*, 38(2), 71-75. <https://doi.org/10.1097/NND.0000000000000739>



57