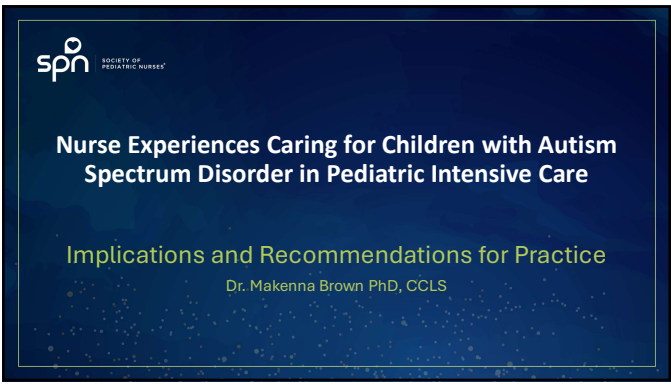
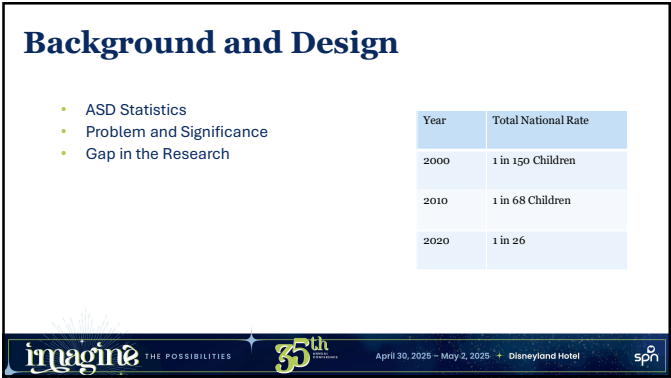




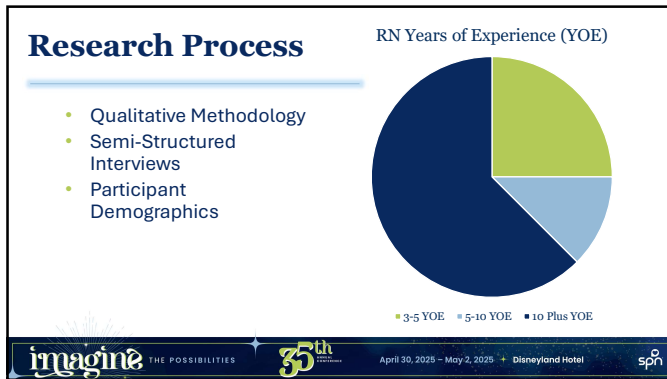
1



2



3



4

Challenge 1

Lack of specific strategies and Knowledge

Personally...it helps me to understand. Like, what's going on...even just like defining what autism is and how it's diagnosed. What are the criteria . . . even just understanding...what's going on in their brain and what are the symptoms or things that are part of the diagnosis? -Quinn

THE POSSIBILITIES

 April 30, 2025 - May 2, 2025 + Disneyland Hotel

5

Strategies

- In person Education
 - Emphasis on practical knowledge
 - Patho-Physiology
- Hands-On Skills Development
- Open Forum Style Q&A
 - Aim to Reduce Stigma

THE POSSIBILITIES

 April 30, 2025 - May 2, 2025 + Disneyland Hotel

6

Challenge 2

Balancing significant Medical Needs and ASD Symptomology

In the ICU we touch a lot. We do a lot of interventions. These things we have to do to keep them safe and alive or to help them can also cause emotional harm. And it is difficult to regulate and balance that too. - Oliver

This is one of the most abnormal environments possible . . . a [person without ASD] doesn't know what to do in this environment. -Leah

THE POSSIBILITIESApril 30, 2025 - May 2, 2025Disneyland Hotel

7

Strategies

- Parent Engagement
- Personalization of Care
 - Interprofessional Support and Collaboration
 - Bedside Adaptations
- Potential Hospital Level Resources




THE POSSIBILITIESApril 30, 2025 - May 2, 2025Disneyland Hotel

8

Challenge 3

Communication Barriers and Challenges

It can feel stressful. Sometimes you feel like a detective, like trying to put all the pieces together to, like, see the whole picture, you know? So, I definitely feel like sometimes it feels. Yeah, like, frustrating in the sense that you're having to, like, search to, like, search out the answers. -Quinn

THE POSSIBILITIESApril 30, 2025 - May 2, 2025Disneyland Hotel

9

Strategies

- Nurse to Nurse Communication
- Electronic Medical Record “flags”
- Clear Escalation Pathway

imagine

THE POSSIBILITIES

35th

ANNIVERSARY

April 30, 2025 – May 2, 2025 + Disneyland Hotel

spn

STAY PREFERENTIAL NIGHT

10

Challenge 4

Person/System Level Barriers

Some are very fixated on their time frames that they have to get done with rounds...and get out fast, that they have no time for [FCC]. And so, they shut you down. Some are judgmental in their own right and being and feels like it doesn't matter, and some want to hear but just don't have the bandwidth. -Oliver

imagine

THE POSSIBILITIES

35th

ANNIVERSARY

April 30, 2025 – May 2, 2025 + Disneyland Hotel

spn

STAY PREFERENTIAL NIGHT

11

Strategies

- Trauma Informed Care
- Specialized Care Teams
 - Across the Healthcare Continuum
- Electronic Medical Record Integration
- Reducing Stigma System Wide

imagine

THE POSSIBILITIES

35th

ANNIVERSARY

April 30, 2025 – May 2, 2025 + Disneyland Hotel

spn

STAY PREFERENTIAL NIGHT

12

Conclusion

- Universal Application
- Culture of Collaboration
- Patient and Family Centered Care
- Nursing Impact



13



You treat a disease: you win, you lose. You treat a person, I guarantee you win—no matter the outcome.
—Robin Williams in Patch Adams

14

References

- Ames, J. L., Massolo, M. L., Davignon, M. N., Qian, Y., & Croen, L. A. (2020). Healthcare service utilization and cost among transition-age youth with autism spectrum disorder and other special healthcare needs. *Autism*, 25(3), 705–718. <https://doi.org/10.1177/1362361320931268>
- Brown, M. K. (2025). *Nurse experiences of caring for children with autism spectrum disorder in Los Angeles pediatric intensive care units* (3166093191) [Doctoral dissertation, Walden University]. ProQuest.
- Centers for Disease Control and Prevention. (2022, December 9). *Basics about autism spectrum disorder (asd)*. <https://www.cdc.gov/ncbddd/autism/facts.html>
- Fisk, A. C., Mott, S., Meyer, S., & Connor, J. A. (2022). Parent perception of their role in the pediatric cardiac intensive care unit. *Dimensions of Critical Care Nursing*, 41(1), 2–9. <https://doi.org/10.1097/dcc.0000000000000503>
- Fraatz, E., & Durand, T. M. (2021). Meeting the needs of children with autism spectrum disorder and their families in hospital settings: The perspectives of certified child life specialists and nurses. *The Journal of Child Life: Psychosocial Theory and Practice*, 2(2). <https://doi.org/10.55591/001c.27703>



15

References

Ghanouni, P., Hood, G., Weisbrot, A., & McNeil, K. (2021). Utilization of health services among adults with autism spectrum disorders: Stakeholders' experiences. *Research in Developmental Disabilities*, 119, 104120. <https://doi.org/10.1016/j.ridd.2021.104120>

Harkins, C. M., Handen, B. L., & Mazurek, M. O. (2021). The impact of the comorbidity of asd and adhd on social impairment. *Journal of Autism and Developmental Disorders*, 52(6), 2512–2522. <https://doi.org/10.1007/s10803-021-05150-1>

Huber, J. F., Loh, A., Monga, S., Esufali, J., & Shouldice, M. (2022). Development of a novel multi-disciplinary specialized care service for children and adolescents with autism spectrum disorder and/or intellectual/developmental disability in a tertiary children's hospital setting. *Children*, 10(1), 57. <https://doi.org/10.3390/children10010057>

Kindratt, T. B., Lark, P., Ray, M., & Brannon, G. (2022). Disparities in patient- and family-centered care among children with health conditions. *Journal of Patient Experience*, 9, 237437352210924. <https://doi.org/10.1177/23743735221092434>

Maenner, M. J., Warren, Z., Williams, A., Amoakohene, E., Bakian, A. V., Bilder, D. A., Durkin, M. S., Fitzgerald, R. T., Fumier, S. M., Hughes, M. M., Ladd-Acosta, C. M., McArthur, D., Pas, E. T., Salinas, A., Vehorn, A., Williams, S., Esler, A., Grzybowski, A., Hall-Lande, J., ... Shaw, K. A. (2023). Prevalence and characteristics of autism spectrum disorder among children aged 8 years — autism and developmental disabilities monitoring network, 11 sites, united states, 2020. *MMWR. Surveillance Summaries*, 72(2), 1–14. <https://doi.org/10.15585/mmwr.ss7202a1>

Mahoney, W. J., Villacrisis, M., Sompolski, M., Iwanski, B., Charman, A., Hammond, C., & Abraham, G. (2021). Nursing care for pediatric patients with autism spectrum disorders: A cross-sectional survey of perceptions and strategies. *Journal for Specialists in Pediatric Nursing*, 26(4). <https://doi.org/10.1111/jspn.12352>



THE POSSIBILITIES



April 30, 2025 – May 2, 2025 + Disneyland Hotel



16

References

Mason, D., Ingham, B., Birtles, H., Michael, C., Scarlett, C., James, I. A., Brown, T., Woodbury-Smith, M., Wilson, C., Finch, T., & Parr, J. R. (2021). How to improve healthcare for autistic people: A qualitative study of the views of autistic people and clinicians. *Autism*, 25(3), 774–785. <https://doi.org/10.1177/1362361321993709>

Menezes, M., Robinson, M. F., Harkins, C., Sadikova, E., & Mazurek, M. O. (2021). Unmet health care needs and health care quality in youth with autism spectrum disorder with and without intellectual disability. *Autism*, 25(8), 2199–2208. <https://doi.org/10.1177/13623613211014721>

Myers, S. M., Voigt, R. G., Colligan, R. C., Weaver, A. L., Storlie, C. B., Stoeckel, R. E., Port, J. D., & Katusic, S. K. (2019). Autism spectrum disorder: Incidence and time trends over two decades in a population-based birth cohort. *Journal of Autism and Developmental Disorders*, 49(4), 1455–1474. <https://doi.org/10.1007/s10803-018-3834-0>

Salvatore, G. L., Simmons, C. A., & Tremoulet, P. D. (2022). Physician perspectives on severe behavior and restraint use in a hospital setting for patients with autism spectrum disorder. *Journal of Autism and Developmental Disorders*, 52(10), 4412–4425.

Shoaib, A., Cepeda, M., Murray, G., & Ochs-Ross, R. (2021). Autism: Comorbidities and treatment patterns in the real world, a retrospective cohort study among children, adolescents and adults newly diagnosed with autism. *Journal of Autism and Developmental Disorders*, 52(10), 4311–4320. <https://doi.org/10.1007/s10803-021-05289-x>



THE POSSIBILITIES



April 30, 2025 – May 2, 2025 + Disneyland Hotel



17
