



1



2



3

SDOH Importance

The Importance of SDOH

- Improving SDOH disparities can lead favorable patient outcomes by increasing health equity
 - The health care team can identify patients with high risk SDOH factors by gathering pertinent patient information
 - The most efficient method to collect patient information upon admission is through SDOH screenings

(Arroyave Caicedo et al., 2023)



4

Top Pediatric Health System



More than 110-year history
providing care to
children from birth to
adulthood.



Nearly 3,000 nurses
across the system.



Two world-class hospitals
(488 licensed beds in
Dallas, 212 in Plano) and
60 locations offering
specialty care in North
Texas.



Magnet Recognized, first
achieved in 2009, with
redesignations in 2013,
2016, and 2023.



More than 10,000
team members care
for more than 300,000
children a year.



Two academic research
partners and joint pediatric
enterprise affiliation to
UT Southwestern Medical
Center.



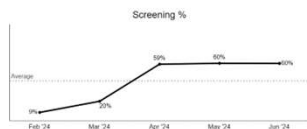
children'shealth.



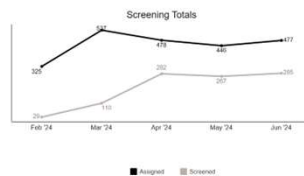
5

Baseline Data

SDOH Screenings




Assigned vs Completed Screenings



6

SDOH Screening Barriers

- Patient or caregiver comfortability
- Uncertainty of screening completion
- Nursing workload and staffing acuity
- Task accountability




imagine THE POSSIBILITIES **35th** April 30, 2025 - May 2, 2025 + Disneyland Hotel spn

7

Intervention Creation and Implementation

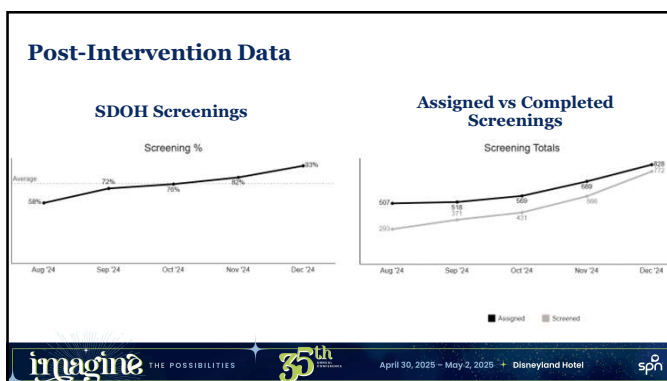
- Addressed barriers by education
- Multi-versed screening options
- Script examples
- EHR breakdown and explanation



- Staff meeting presentations
- Tip Sheet dissemination
- Weekly newsletters
- Staff rounding

imagine THE POSSIBILITIES **35th** April 30, 2025 - May 2, 2025 + Disneyland Hotel spn


8



9

SDOH Success Story

- A patient's entire family, including parents and two siblings—were experiencing homelessness. On the first night of their hospital stay, the clinical team ensured that the family could remain together in the hospital and with the help of Social Work, the family was offered a temporary hotel stay. At the time of this update, the team is actively working toward a more stable, long-term solution to support the family throughout the patient's hospitalization and beyond discharge.




imagine THE POSSIBILITIES **35th** April 30, 2025 ~ May 2, 2025 + Disneyland Hotel spn

10

Where do we go from here?

- Improving ER patient screening completion rates
- Grow inclusivity and availability of screenings via EHR patient portals (i.e. smartphone app, patient bedside tablets)
- Maintaining current screening rates through staff education and data check-ins
- Gather feedback



imagine THE POSSIBILITIES **35th** April 30, 2025 ~ May 2, 2025 + Disneyland Hotel spn

11

References

Arroyave Caicedo, N., Parry, E., Arslan, N., & Park, S. (2023). Integration of social determinants of health information within the primary care electronic health record: A systematic review of patient perspectives and experiences. *BJGP Open*, 8(1), BJGPO.2023.0155. <https://doi.org/10.3399/bjgp.2023.0155>

Jetelina, K. K., Rodriguez, P., Oke, O. K., Mathew, M., Schoppa, S., Booker-Nubie, Q., & Messiah, S. E. (2020). Factors influencing the implementation of social determinants of health screening and referral processes in pediatric settings serving medically complex patients. *Journal of Applied Research on Children: Informing Policy for Children at Risk*, 11(1). <https://doi.org/10.58464/2155-5834.1410>

Williams, S. A., Martin, M., Hussey, L. C., Ojeda, M., Carlson, B., & Keckler, M. (2024). Are we missing the mark? understanding health literacy in a rural-border hospital. *Clinical Nursing Research*, 33(5), 326–333. <https://doi.org/10.1177/10547738231221861>

imagine THE POSSIBILITIES **35th** April 30, 2025 ~ May 2, 2025 + Disneyland Hotel spn

12



13
