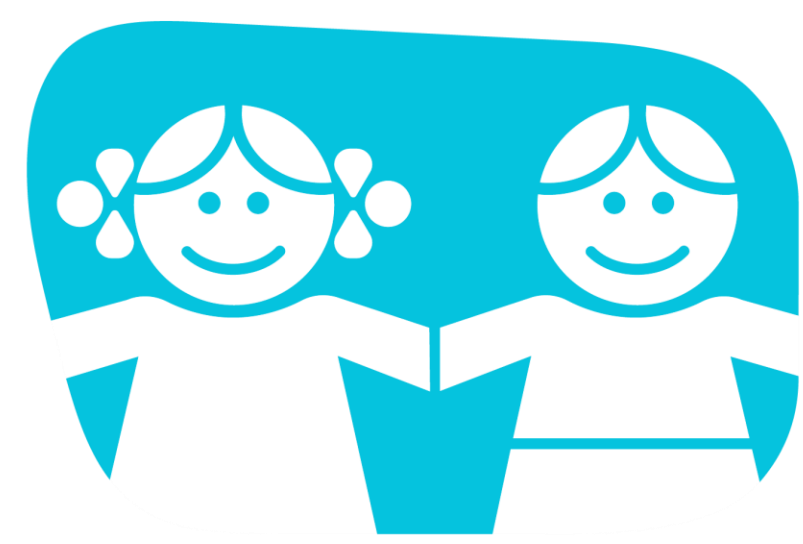


Education, engagement, and a little bit of pixie dust: creating an enchanted fall prevention program

Diana Diaz, MBA, BSN, RN, NE-BC, PED-BC
Stephanie Coig, MBA, BSN, RN, NEA-BC, CPN



Manning Family
Children's
LCMC Health

Problem/Clinical Issue

Pediatric falls are a significant concern in hospital settings and often misunderstood due to the nature of a child's growth and development, which includes developmental falls. Despite occurring less frequently than in adult settings, pediatric falls can still lead to temporary or permanent injury (Parker et al, 2020). Understanding the specific challenges and risk factors associated with falls in the pediatric inpatient setting is crucial for developing effective prevention strategies and ensuring the safety of this patient population.

Purpose

The purpose of the project was to reduce the fall rate across all inpatient acute care areas.

Evidence Summary

Evidence suggests the importance of using a multifaceted approach to reduction strategies including a comprehensive risk assessment process utilizing an assessment tool, individualized fall care plans, environmental modifications, staff and family education, continuous monitoring and evaluation, multifactorial interventions, and a multidisciplinary approach to improving patient safety (Benning, 2019; DiGerolamo et al, 2022; Kim et al, 2021; Lawrence et al, 2024; Parker et al, 2020).

Implementation

With a focus on meeting the project objectives, and with the support of Nurse Leader stakeholders, a 3-phase program was implemented.

Staff Education

- Gap assessment
- Education at staff meetings
- Escape room

Caregiver Engagement

- Updated bedside signage to include universal fall precautions
- Rehab admission booklet and education revision
- Acute Care admission brochure
- Welcome video
- Fall debriefs
- Leadership and rehab nurse weekly rounds



Fall Precautions: Help us prevent a fall!

1. Keep call light close and call for help before getting out of bed.
2. Wear non-skid footwear before leaving bed.
3. If you have a fall risk bracelet, make sure to keep it on.
4. Leave bed in lowest position with side rails up.
5. Keep all crib rails up when leaving child unattended.
6. If you must leave your child unattended please notify a nurse or another staff member.
7. Use the red pull cord for help in the bathroom.

Visitor Policy

- Visitors are good medicine for our patients, so family members and friends are welcome to visit!
- In the Acute Care area, visitation should be limited to four (4) people at the bedside. Each unit may have specific visitation restrictions based on the needs of the patient.
- All visitors require an identification badge for access and should be free of cold or viral illness.
- Siblings, other family members and guests are welcome between the hours of 8am to 9pm.
- All visitors under the age of 18 must be accompanied by an adult.
- Two (2) caregivers (parent, legal guardian, or parent designee) 18 years of age or older are allowed to stay overnight.

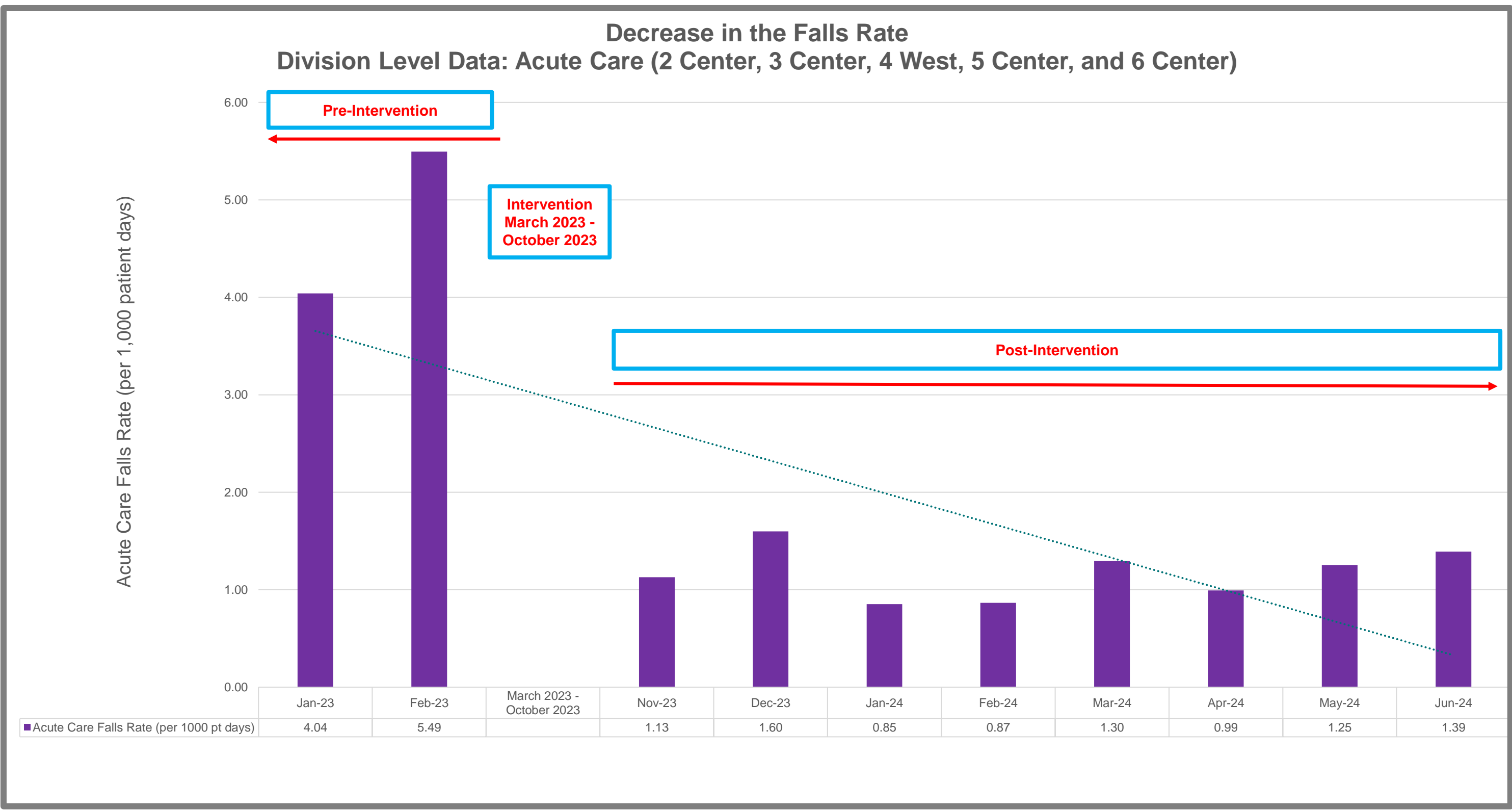


Welcome to Acute Care



Results

As a result of implementing a fall prevention nursing needs assessment, an implementation plan inclusive of education, an acute care welcome pamphlet, new fall prevention signs, rehab admission packet revisions, and leadership rounds, the acute care fall rate decreased.



References

- Benning, S., & Webb, T. (2019). Taking the fall for kids: A journey to reducing pediatric falls. *Journal of Pediatric Nursing*, 46, 100–108. <https://doi.org/10.1016/j.pedn.2019.03.008>
- DiGerolamo, K. A., Frankenberger, W., & Birnbaum, S. (2022). Children's falls inside the inpatient setting: A qualitative study of parent perceptions and the implications for falls prevention messaging. *Journal of Pediatric Nursing*, 67, 102–106. <https://doi.org/10.1016/j.pedn.2022.08.005>
- Kim, E.-J., Kim, G.-M., & Lim, J.-Y. (2021). A systematic review and meta-analysis of fall prevention programs for pediatric inpatients. *International Journal of Environmental Research and Public Health*, 18(11). <https://doi.org/10.3390/ijerph18115853>

Additional References available upon request.

Contact Information

Diana Diaz MBA, BSN, RN, NEA-BC, CPN, Department Director,
504-894-6866
Diana.Diaz@lcmchealth.org

Stephanie Coig, MBA, BSN, RN, NEA-BC, CPN, Senior Director Patient Care
Services, 504-894-6999
Stephanie.Coig@lcmchealth.org

