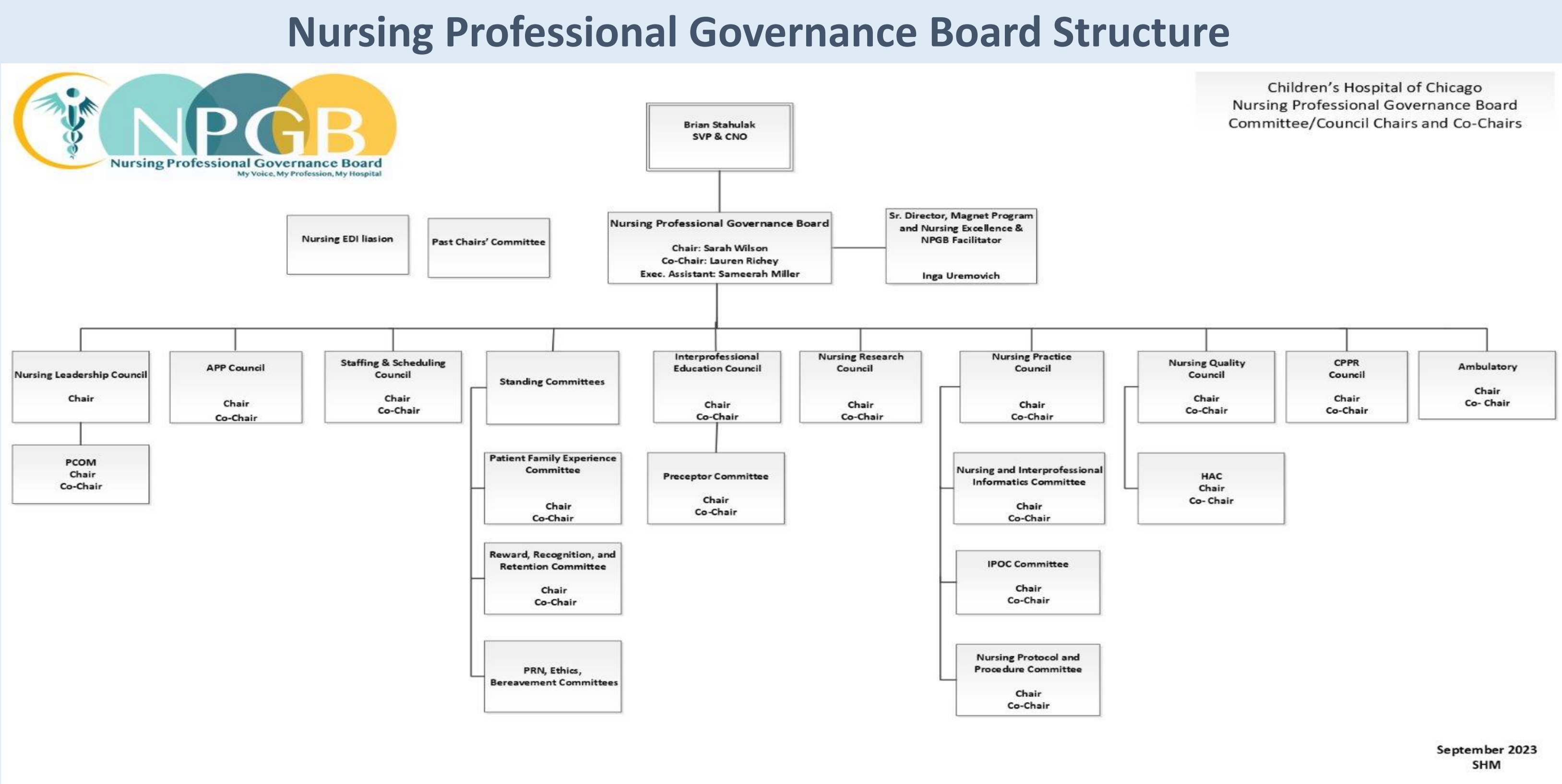
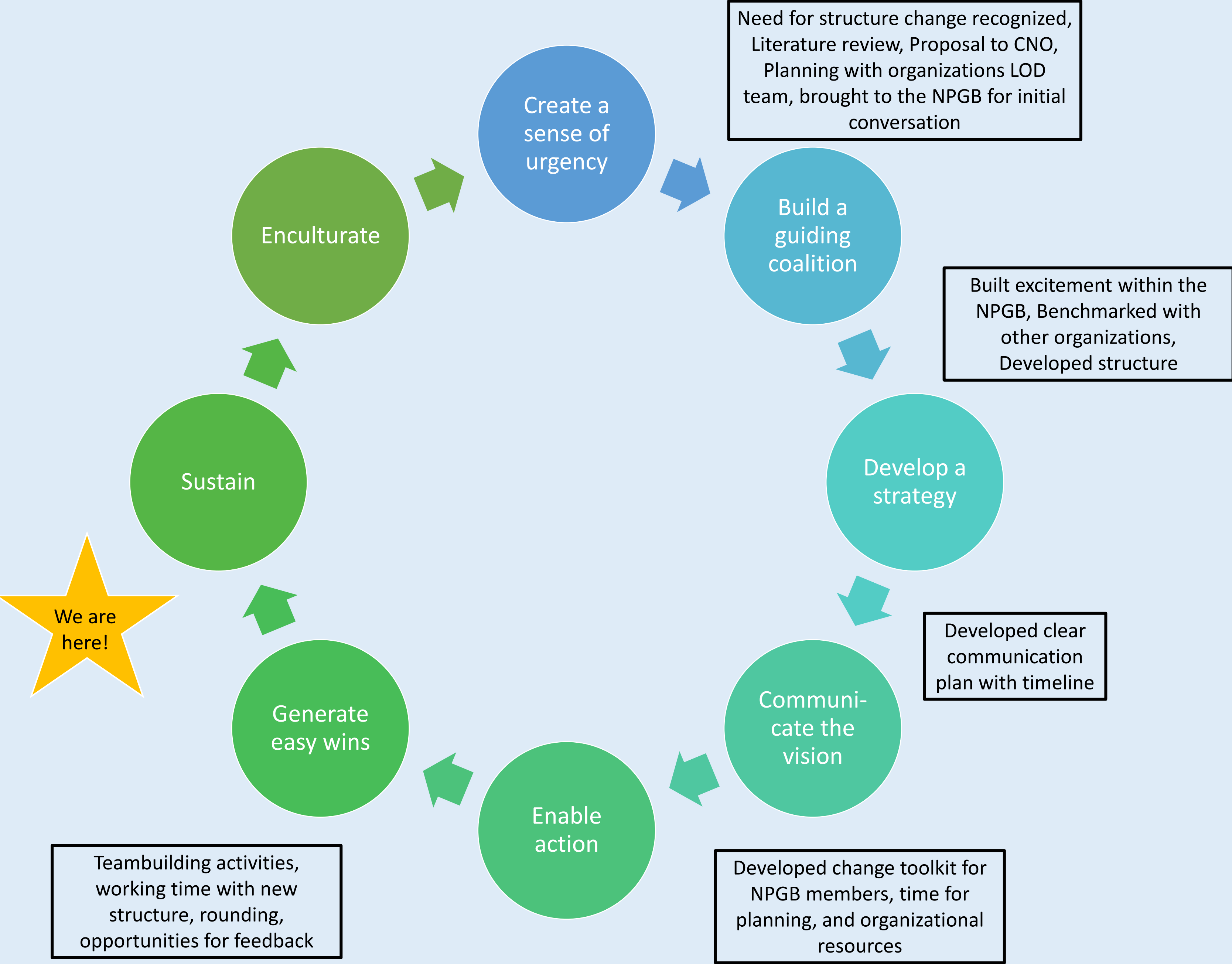


Background/Problem

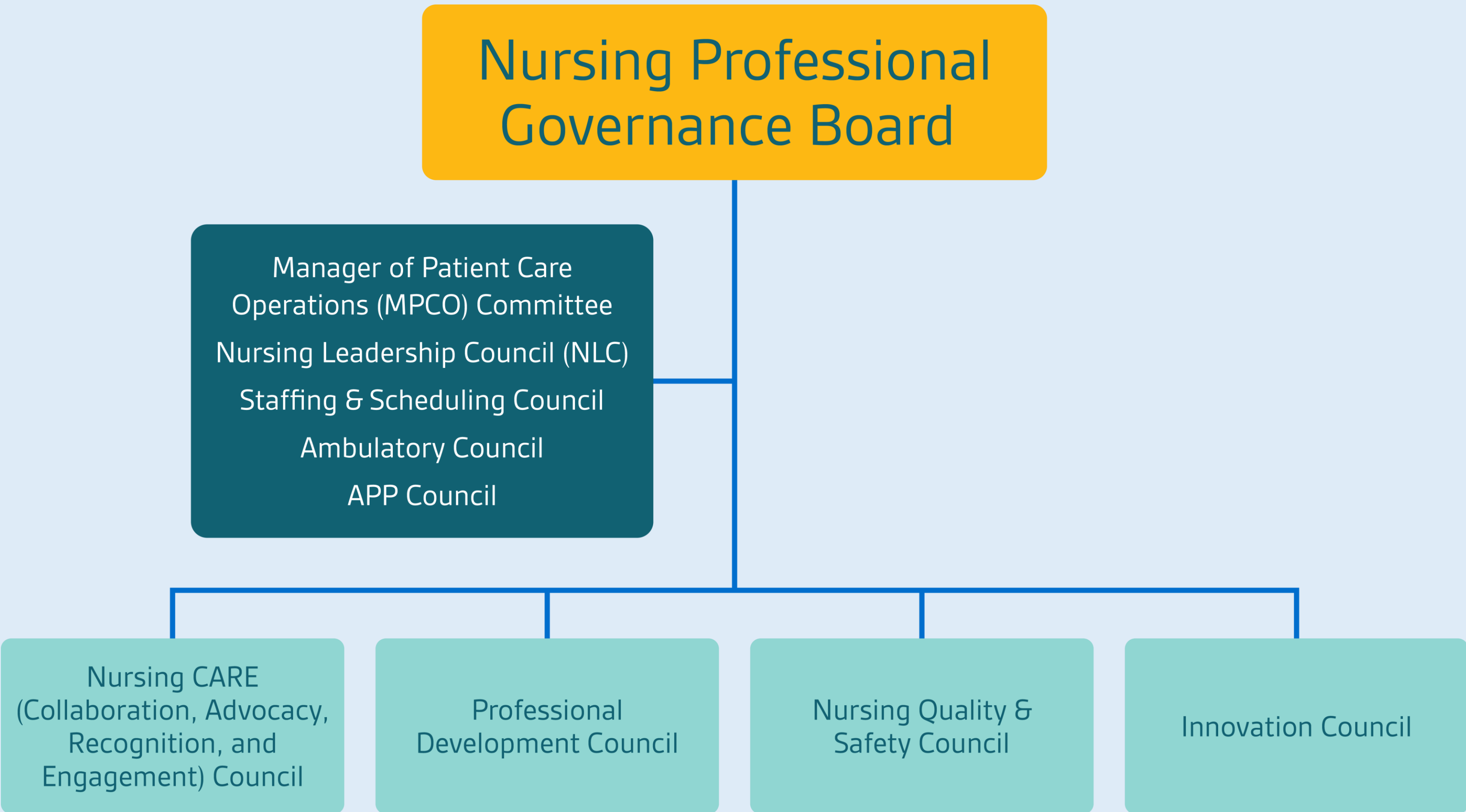
The Lurie Children's Nursing Professional Governance Board (NPGB) is made up of clinical nurses from all areas of the organization and is the overarching decision-making structure for nursing professional practice. The NPGB has grown exponentially over the last 30 years to sixteen councils and committees, and some non-voting partnerships. The NPGB receives two to six requests annually from additional committees requesting NPGB membership. Challenges with filling positions, participation with large groups, and opportunity for improved communication were noted.



Strategy and Implementation



Outcomes



- Improved support for council chairs and co-chairs
- More people participating at the council level where the work is occurring
- Dedicated administrative professional for each council
- Increase in protected time for council chairs and co-chairs, 0.4FTE (16 hours a week)
- Support for resources from CNO assigned advisors in various levels of leadership
- Standing weekly check ins for council chair collaboration
- More competitive process to fill positions with less positions available

Next Steps

- Go-live with new structure the week of May 11
- Measurement plan utilizing the Index for Professional Nursing Governance (IPNG) to be completed prior go-live and two years post structure change

References & Contact Info

