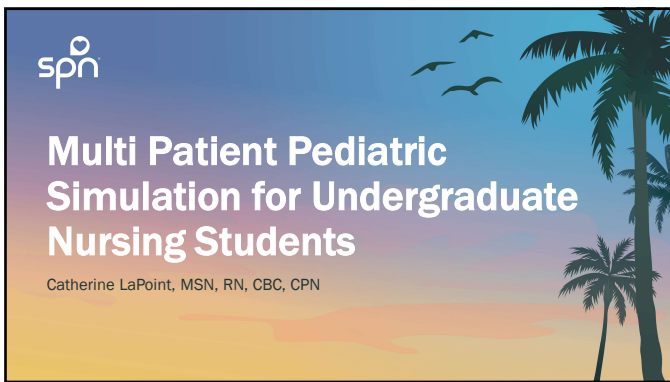




1



2

Identified Gap

Lack of clinical placement opportunities
Students graduating without touching a pediatric patient

Standardized specialty exam scores trended low for several pediatric topics prior to implementation of the simulation in Fall 2024

An illustration of a female doctor in a white coat talking to a young boy and his mother. The boy is sitting in a hospital bed. The SPN logo is in the top right corner.

3

Topic Selection



Based on didactic lecture day –
Pediatric Specialty Day

- Pediatric Endocrine
- Adolescent Admission
- Child Abuse
- Pediatric End of Life – Sepsis



4

Simulation Timeline



- 0800-0930 Prelab
- 0930-1000 Round 1
- 1000-1030 Round 2
- 1030-1100 Round 3
- 1100-1130 Round 4
- 1130-1300 Debrief



5

Pediatric Endocrine



Hypoglycemia episode for a 5 year old female

Patient recently admitted for dehydration due to viral illness.

Students are to do a shift physical assessment. While in room the lab calls the critical glucose lab.



6

Adolescent Admission



An adolescent female is directly admitted for IV antibiotics

Students are to conduct an admission assessment, as well as obtain the patient's history.



7

Child Abuse



A seven year old being screen for child abuse injuries

Students utilize documentation papers provided to obtain a full physical assessment.

Students have to use therapeutic communication to obtain information from the frightened child.



8

Pediatric End of Life - Sepsis




A three year old that dies from a delayed diagnosis of sepsis


There one is conducted differently. It is done by a video scenario. There are no formal roles in this simulation. It is a round table discussion where a video is shown and stopped at intervals to promote discussion.




9

Weaknesses 

- 5 hour simulation
- Lots of spaces (4-5 rooms)
- Need several faculty members
- Need several simulators



10


Strengths 

Over 95% of students have provided positive feedback regarding the simulation.

Great increase in scores on standardized specialty exam scores.

Heel Scores Averaged Fall 2023 and Spring 2024	
Pediatric Score	- Average increase in 5 points
Endocrine	- Average increase 50 points
Pysch	- Average increase 145 points

11


References 


Eppich, W. & Cheng, A. (2015). Promoting excellence and reflective learning in simulation (PEARLS): Development and rationale for a blended approach to health care simulation debriefing. *Society for Simulation in Healthcare*, 10(2), 106-115. Doi: 10.1097/SIH.0000000000000072

Hudacek, S., & Wagner, E. (2023). NCLEX vs Next Generation NCLEX: Exam changes put the focus on clinical judgment, problem solving, and critical thinking. *American Nurse Journal*, 18(11), 42-46. <https://doi-org.libproxy.lamar.edu/10.51256/ANJ112342>

Sportsman, S. (2020). HESI RN specialty exams improve scores on exit exam (E2). Elsevier.

12

Questions 



A rectangular box with a black border. In the top-left corner, the word "Questions" is written in a bold, black, sans-serif font. In the top-right corner, there is a logo consisting of the lowercase letters "spn" in a blue, sans-serif font, with a small yellow circle above the "p". In the center of the box, there are three stylized question marks: a yellow one on the left, a blue one in the middle, and a red one on the right. The question marks have a slight 3D effect with a darker shade on their right side. At the bottom of the box, there is a horizontal gradient bar that transitions from yellow on the left to blue on the right.
