



1

---

---

---

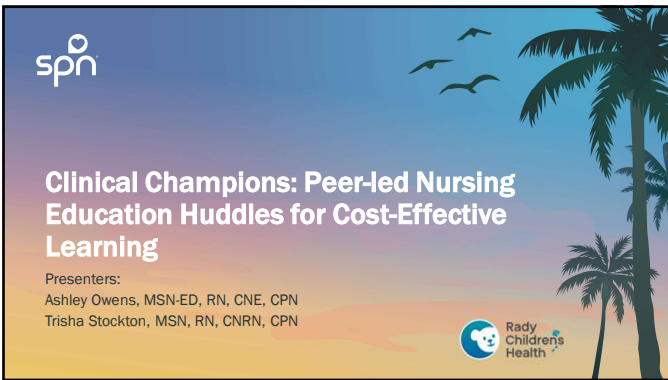
---

---

---

---

---



2

---

---

---

---

---

---

---

---



3

---

---

---


---

---

---

---

---



## What barriers do you encounter for hands on education?

Do not exit here - skip the design

The Slido app must be installed on every computer you're presenting from **slido**

---

---

---

---

---

---

---

---

4

### Program Design

- Microlessons- 10-15 min, on shift
- Relevant topics-need based and/or requested
- Developed quarterly education-policy driven, hands on skills
- Alternated educators' responsibility-shared the burden
- Trained Clinical Champions
- Surveyed staff for efficacy, suggested topics.

---

---

---

---

---

---

---


---

5

### Implementation

Started beginning of fiscal year, July 2024.

- We've completed 8 quarters of educational topics
- These have included:
  - Bladder Irrigation, Bridle placement for NGT, phototherapy, blood administration, Gastronomy tubes, and Tracheostomy.
  - Unit specific examples: Diluted insulin, Neuro Pathways, new product education.




---

---

---

---

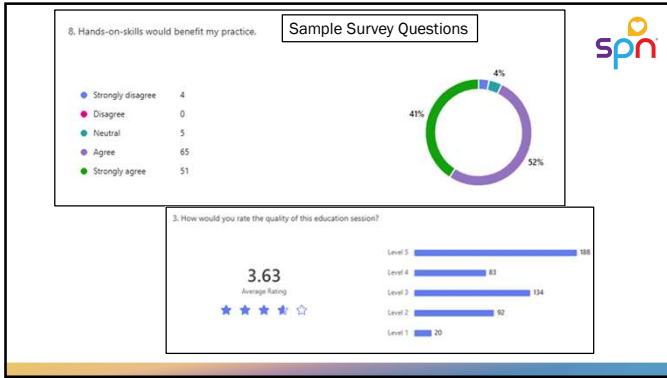
---

---

---

---

6



7

---

---

---

---

---

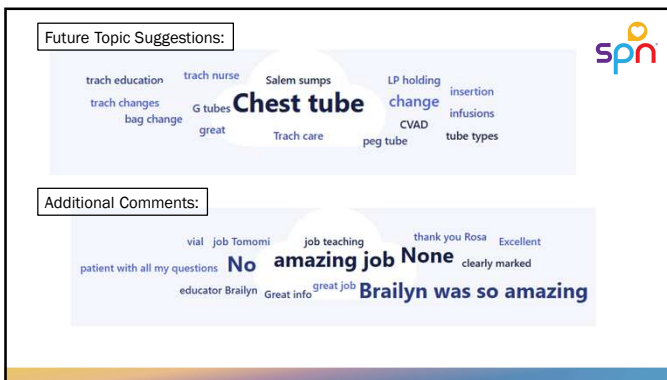
---

---

---

---

---



8

---

---

---

---

---

---

---

---

---

---

**Let's try it!**

Clinical Champions- NGT Bridle

**BRIDLE PLACEMENT AND REMOVAL**

**INDICATIONS FOR PLACEMENT**

**HOW TO PLACE**

**HOW TO REMOVE**

9

---

---

---

---

---

---

---

---

---

---

### Lessons Learned



- Need consistent, committed Champions
- Engaging topics
- Accessible system for tracking
- Leadership support
- Permission to pause- for learners and Champions

Questions?

---

---

---

---

---

---

---

---

10



### Contact Info:

Ashley Owens  
[Aowens@choc.org](mailto:Aowens@choc.org)

Trisha Stockton  
[Tstockton@choc.org](mailto:Tstockton@choc.org)

---

---

---

---

---

---

---

---

11