



1



2

MISSION | VISION | VALUES

Mission

- To advocate for the specialty of pediatric nursing by advancing excellence in education, research, and evidence-based practice.*

Vision

- SPN will be the premier professional nursing organization that establishes and promotes nursing standards of excellence for the care of children and their families.*

Core Values

- Commitment, Integrity, Leadership, Excellence.*



3

2022-2025 STRATEGY

Elevate Career Growth

- Create a structured mentoring program (novice-to-master)
- Launch ongoing microlearning content on pediatric hot topics
- Build and enhance key nursing organization relationships for future partnership

Generate Visibility

- Develop and Launch Pediatric Nurse Department Excellence Program
- Become key influencer to pediatric nursing research and practice through leadership and organizational leadership development

Increase Pediatric Nursing

- Create Pediatric Nurse Ambassadors Program (high school and college)
- Conduct research on why pediatric bedside nurses are leaving pediatrics



4

ON DIVERSITY, EQUITY, AND INCLUSION

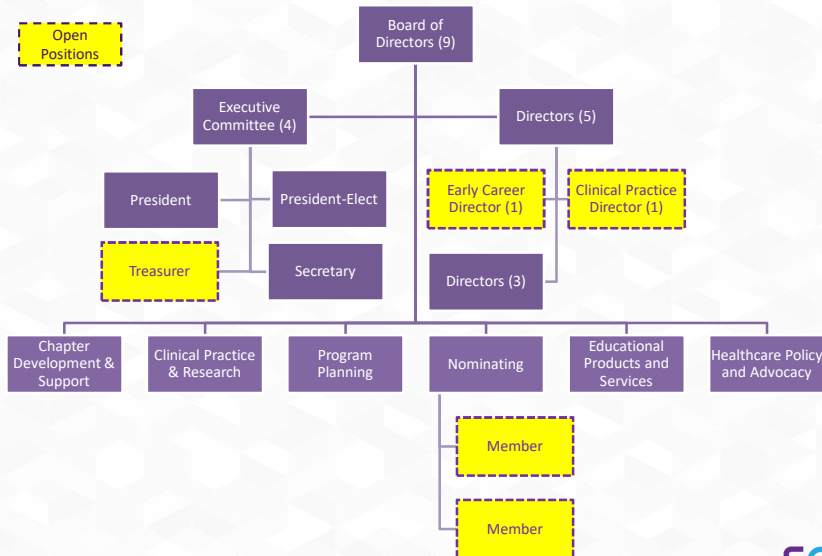
The Society of Pediatric Nurses (SPN) remains dedicated to its mission of advancing the specialty of pediatric nursing through excellence in education, research, and practice. SPN values its diverse membership providing care across roles, settings, geographic locations and patient populations.

We believe in the dignity of our members and in every child and family that we serve. SPN is committed to providing its leaders and members with education on racial bias and to advocating for policies that promote social justice and reduce disparities.



5

STRUCTURE & OPENINGS



6

2025 CALL FOR APPLICANTS

Eligibility for All Positions:

- Active SPN Membership \geq 1 year
- Has not served on SPN BOD > 2 consecutive or total of 6 consecutive years
- Commitment of service in desired position/term
- Actively engaged in and/or has specific pediatric nursing expertise
- Participates in pediatric nursing-related activities locally or nationally



7

2025 CALL FOR APPLICANTS

Treasurer (3-year-term):

- Monitors SPN's financial status, reports on budget to President and Board
- Serves on Executive Committee
- Collaborates closely with SPN management team, external auditors, and investment advisors
- Requires average commitment of 2-4 hours per month and attendance at in person Board meeting during SPN Annual Conference

Clinical Practice Director (3-year-term):

- Represents the general membership's interests on issues of interest or concern
- 1 role (>50%) in clinical setting, doing direct patient care
- Represents Members who work at the bedside to ensure perspectives of direct care clinicians are incorporated in decisions made at board level.
- Requires average commitment of 2-3 hours per month and attendance at in person Board meeting during SPN Annual Conference

Early Career Director (3- year-term):

- Represents the general membership's interests on issues of interest or concern
- < 5 years clinical practice experience at start of term
- Represents Members starting their professional nursing career to ensure perspectives of new nurses are incorporated in decisions made at board level
- Requires average commitment of 2-3 hours per month and attendance at in person Board meeting during SPN Annual Conference

Nominating Committee Member (2- year-term):

- Interview candidates
- Review candidates and candidate packages for eligibility and qualifications
- Finalize slate of candidates for election
- Requires an average commitment of 3 hours per month between July and October



8

APPLICATION AND SELECTION

1. Application is available for download on SPN website:
<https://www.pedsnurses.org/leadership>
2. Complete applications must include candidate application and one (1) reference form.
3. Applications are due September 12, 2025
4. Applicants will be notified of their selection for the slate in mid-November.
5. Questions may be directed to
info@pedsnurses.org or a member of the Nominating Committee.



9



10